

MONTHLY MEMBERSHIP PROGRESS REPORT

District 322C5

Results as of: 5/31/2026

GMT:

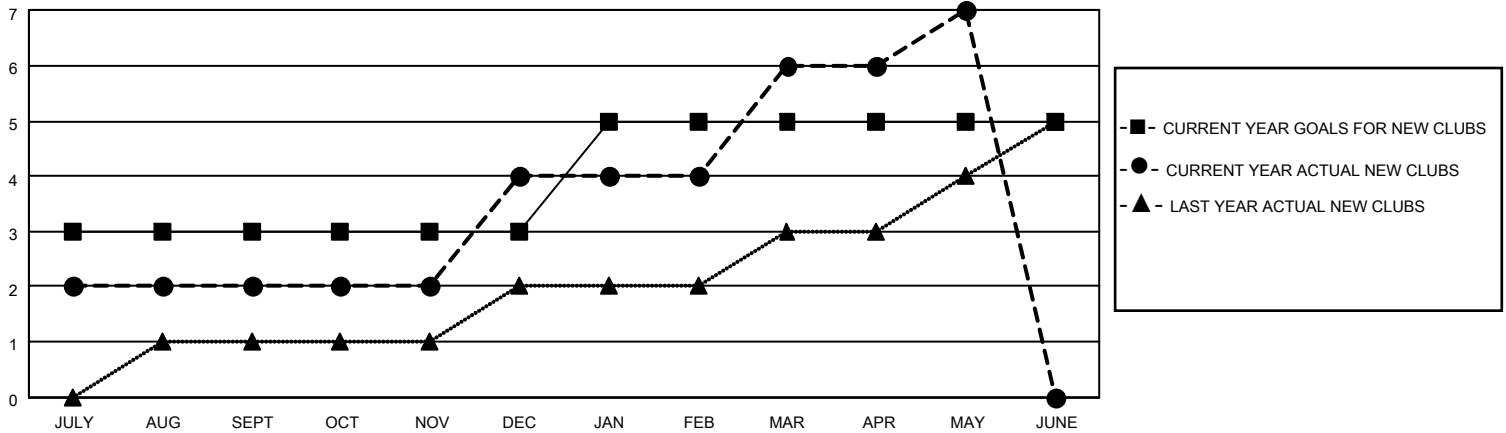
LOCATION INDIA

GMT CA

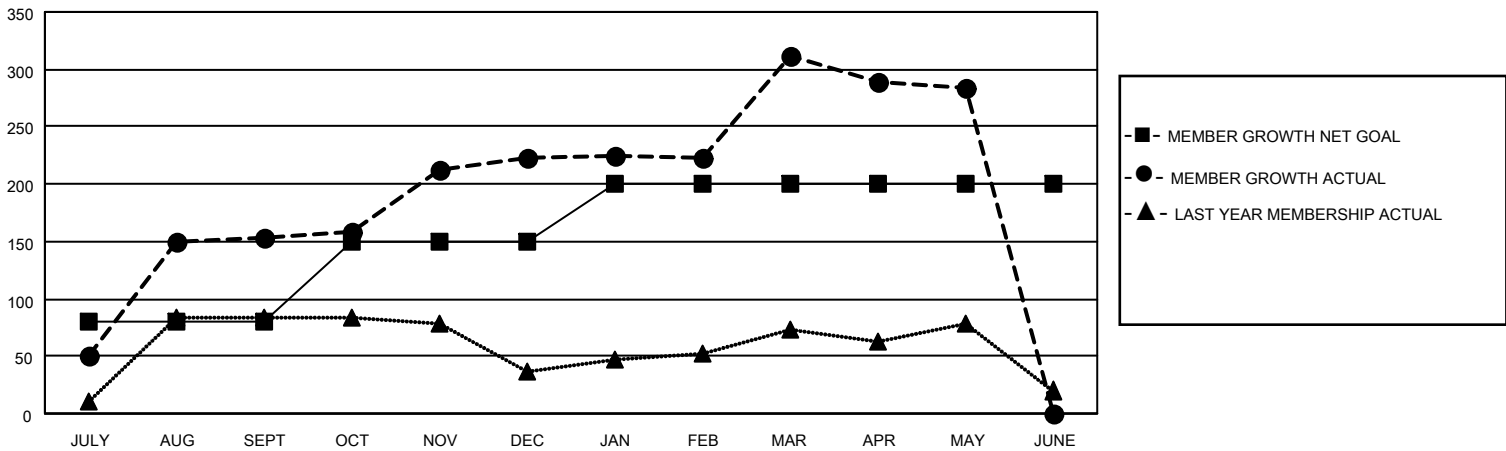
Clubs			
RESULTS FOR 2025-2026			
QUARTER	NEW CLUB GOAL	NEW CLUBS	DROPPED CLUBS
JULY/AUG/SEPT	3	2	0
OCT/NOV/DEC	0	2	1
JAN/FEB/MAR	2	2	0
APR/MAY/JUNE	0	1	0

Members			
RESULTS FOR 2025-2026			
QUARTER	MEMBER GROWTH NET GOAL	MEMBER GROWTH ACTUAL	DROPPED MEMBERS ACTUAL (including transfers)
JULY/AUG/SEPT	80	158	4
OCT/NOV/DEC	70	148	78
JAN/FEB/MAR	50	130	6
APR/MAY/JUNE	0	48	57

GOALS AND ACTUAL NEW CLUBS CUMULATIVE



GOALS AND ACTUAL MEMBERS CUMULATIVE



DROPPED CLUBS: 1	42 CLUBS OF 48 ADDED 1 OR MORE NEW MEMBERS	<u>GENDER DISTRIBUTION</u>	
<u>DROPPED MEMBERS</u>		MALE	1,058 (61.69%)
DECEASED	5	FEMALE	657 (38.31%)
CLUB CANCELLED	35	TOTAL FAMILY UNIT MEMBERS	
OTHER	104	1,158	
TOTAL	144	FAMILY MEMBERS PAYING HALF DUES	
		742	

[CLICK HERE FOR CUMULATIVE MEMBERSHIP DATA](#)